

Ron Hopkinson



PARTS
CENTRE



Combined Front & Rear Suspension Handling Kit

Fitting Instructions



MG
MOTOR CARS
LONDON

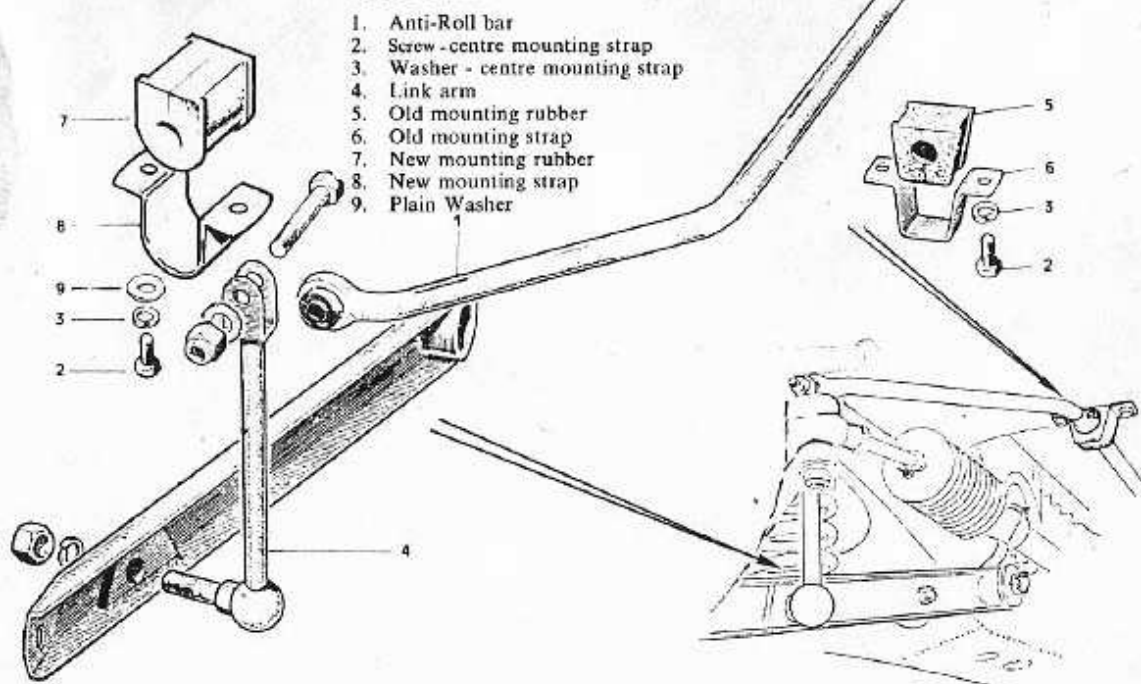
**REMOVE EXISTING FRONT ANTI-ROLL BAR AND FITTING OF NEW ONE
DIAGRAM A**

NOTE: Before commencing to fit the Handling Kit check that the car is already fitted with a front anti-roll bar. A few roadsters were produced without these in which case a fitting kit, part no. T40FA will need to be fitted.

1. Disconnect existing front anti-roll bar (1) from link arms (4), at each end.
2. Remove the four bolts (2) and washers (3) securing the two centre mounting straps (6) to the car, the old anti-roll bar, straps and mounting rubbers (5) can now be discarded.
3. Mount new anti-roll bar centrally in position using the new, wide straps (8) and mounting rubbers (7). Ensure that the plain washers (9) as well as spring washers, (3) are fitted to the straps to avoid the slotted end spreading.
4. Connect existing link arms (4) to the new anti-roll bar at each end.

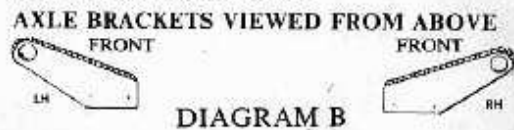
FRONT ANTI-ROLL BAR COMPONENTS

DIAGRAM A



**FITTING AXLE MOUNTING BRACKETS FOR NEW REAR ANTI-ROLL BAR
DIAGRAM B**

1. Safely support the rear of the car on at least two points on the chassis.
2. On left hand (near) side of the car, remove the two front 'U' bolt nuts and washers, and slacken off the two rear ones.
3. Fit left hand axle mounting brackets, see Diagram B (fillet downwards and large hole end facing forwards and outwards), against the shock absorber link plate, refit washers and nuts to the "U" bolts, and re-tighten evenly, ensuring the "U" bolt threads protrude from all the nuts.
4. Repeat on right hand (off) side, using right hand axle mounting bracket.

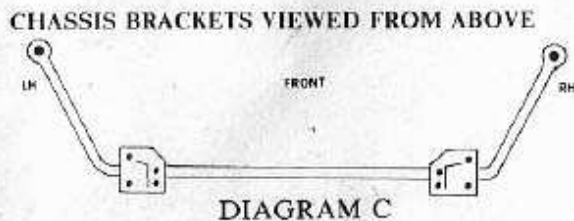


NOTE 1: If your car is already fitted with a rear anti-roll bar (Sept. '76 on) remove and discard the complete assembly.

NOTE 2: If non-original shock absorber brackets (in the case of some types of telescopic conversions) have been fitted, it may be necessary to use longer "U" bolts, part number T40EA.

FITTING BOOT FLOOR MOUNTING BRACKETS FOR NEW REAR ANTI-ROLL BAR
DIAGRAM C

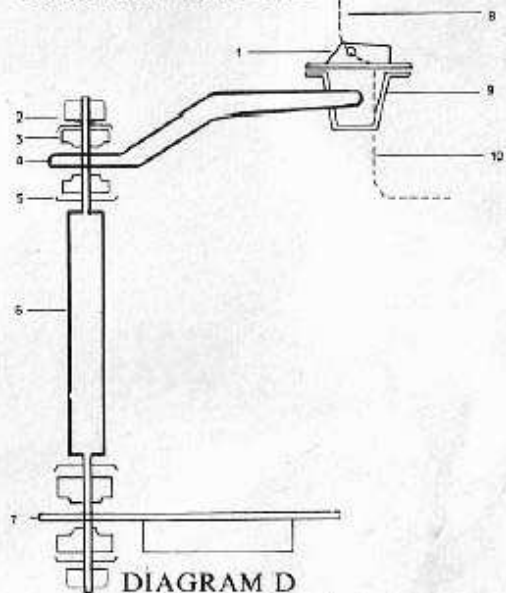
1. Fit mounting rubbers over rear the anti-roll bar, fit the mounting straps over the rubbers and attach to boot floor mounting brackets using the nyloc nuts, bolts, and washers (Brackets positioned fillet upwards and cut off corner forwards and inwards, as diagram)
- 2.a) mark the 3 holes, using the template provided (one on the side and two on the bottom of the boot floor), on both sides of the car, and drill the six 1/8" holes, opening up to a 3/16 clearance.
 - b) position the anti-roll bar centrally, and so that the arms lie pointing forwards over the top of the axle.
 - c) the boot floor mounting brackets should contact the outer face and bottom of the boot floor on both sides.
 - d) check that the anti-roll bar adequately clears the fuel tank (1/4" to 1/2" is sufficient), adjust the holes as necessary, and bolt into position using plain washers on inside of boot.



FITTING LINK ASSEMBLIES TO REAR ANTI-ROLL BAR AND AXLE BRACKETS
DIAGRAM D

1. Safely support the rear of the car under the rear axle, preferably on sturdy axle stands.
2. Mount the link bars (6) onto the axle mounting bracket (7) using the cup washers (5) and rubber bushes (3) as shown in Diagram D. At this point fit the lower nyloc nut to finger tight only.
3. Assemble the top end of the link bar to the anti-roll bar, using the cup washers, rubbers and nyloc nuts, as in 2 above.
4. Prevent the link bar from rotating by using a 1/2" A/F open ended spanner and tighten each nyloc nut. Do not overtighten. Each nut should be tightened so that the rubber bushes are nipped, but not distorted.

REAR ANTI-ROLL BAR SET UP VIEWED FROM LEFT HAND SIDE



1. Boot floor mounting bracket
2. Nyloc nuts
3. Rubber bush
4. Anti-roll bar
5. Cup washer
6. Link bar
7. Axle mounting bracket
8. Boot floor
9. Pivot strap and rubber
10. Fuel Tank



Component List

QTY.	DESCRIPTION
1	Instruction leaflet
1	Paper template
Front Anti-Roll Bar	
1	Front anti-roll bar with bushes
2	Heavy Duty mounting rubbers - front
2	Heavy Duty mounting straps - front
4	5/16" UNF x 1" setscrews
4	5/16" plain washers
4	5/16" spring washers
Rear Anti-Roll Bar	
1	Rear anti-roll bar
2	Mounting brackets - boot floor
2	Mounting rubbers - rear
2	Mounting straps - rear
14	5/16" UNF nyloc nuts
10	5/16" UNF x 3/4" UNF setscrews
10	5/16" plain washers
8	Rubber bushes
8	Cup washers
2	Link bars
2	Mounting brackets - rear axle

London Road
Derby DE2 8WA
Tel: 0332 756056
Fax: 0332 572332

